



WILLAND PARISH



REGISTER of Public Open Spaces and Children's Play Areas and Equipment

April 2015

Index

Site No.	Title	Page Numbers
	West Area Map	3
	Central Area Map	4
	East Area Map	5
1	Harpitt Close	6 - 7
2	Sycamore Close	8 - 9
3	Orchard Way	10 - 11
4	Chestnut Drive/Maple Close	12 - 14
5	Jubilee Parish Field/Gables Lea	15 - 19
6	Victoria Close	20
7	Victoria Close/Blenheim Drive	21 - 24
8	Worcester Crescent	25
9	Willand Moor Road/Poppy Close	26
10	Greenwood	27
11	Culm Valley Trail	28
12	Willand Moor Road	29
13	Aspen Way/Myrtle Close	30
14	Willand Moor/Buttercup Road	31 - 32
15	Mallow Court	33
16	South View Close	34

Willand Area Maps

West Area



Open Space & Play Areas combined



Green Open Space Fenced or Unfenced



Fenced Play Area



Harpitt Close Open Space and Fenced Play Area

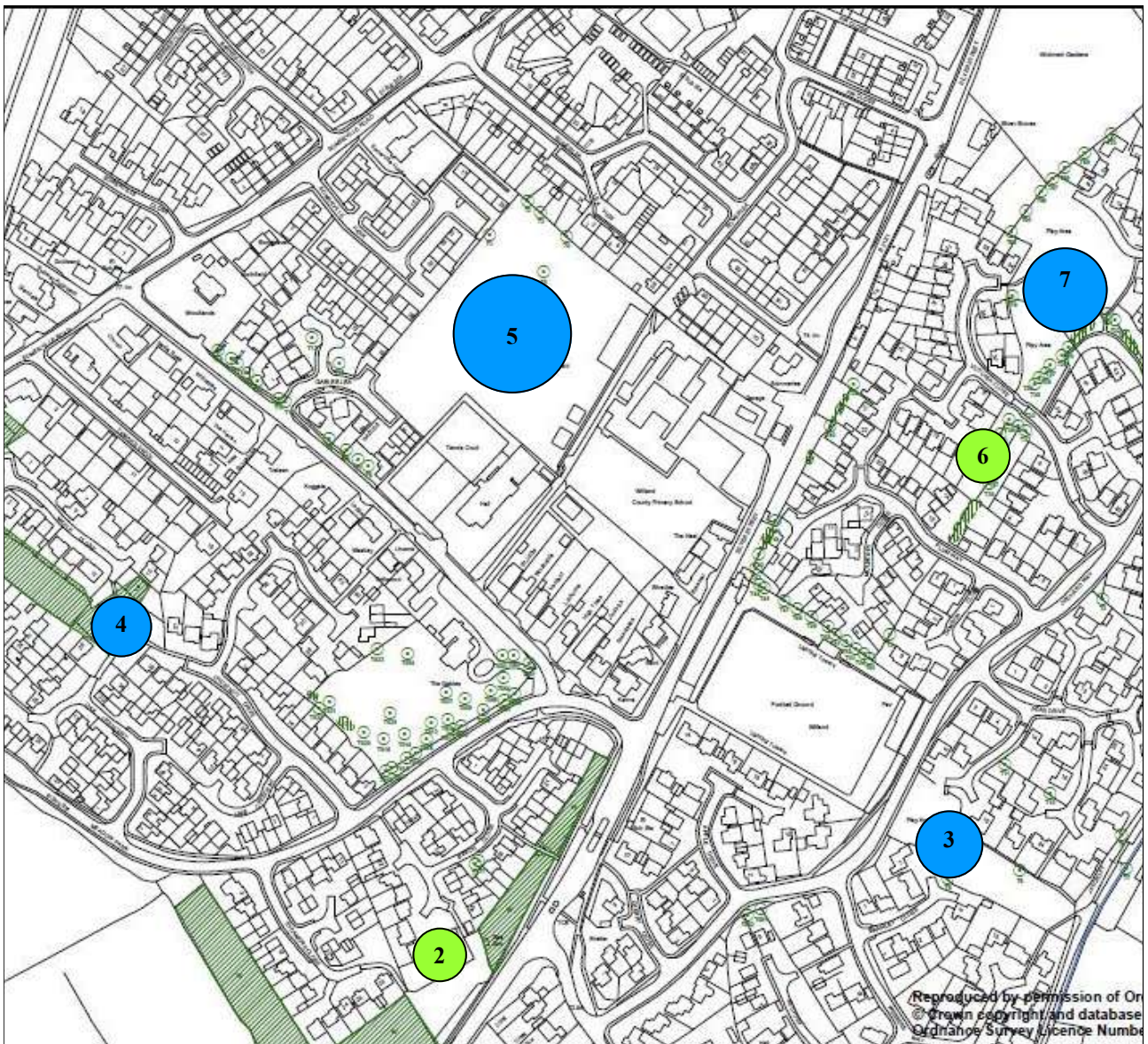


Sycamore Close Open Space



Orchard Way Open Space and Play Area

Central Area



- 2 Sycamore Close Open Space
- 3 Orchard Way Open Space and Play Area
- 4 Chestnut Drive/Maple Close Open Space and Fenced Play Area
- 5 Jubilee Parish Field/Gables Lea Open Space and Fenced Play Area
- 6 Victoria Close Open Space
- 7 Victoria Close/Blenheim Drive Open Space and Play Area

East Area



- 6 Victoria Close Open Space
- 7 Victoria Close/Blenheim Drive Open Space and Play Area
- 8 Worcester Crescent Fenced Play Area
- 9 Willand Moor Road/Poppy Close Fenced Open Space
- 10 Greenwood Fenced Open Space
- 11 Culm Valley Trail Open Space
- 12 Willand Moor Road Fenced Open Space
- 13 Aspen Way/Myrtle Close Fenced Open Space
- 14 Willand Moor/Buttercup Road Fenced Open Space and Play Area
- 15 Mallow Court Fenced Play Area
- 16 South View Close Fenced Play Area

1

Harpitt Close

Owned and Maintained by MDDC

Area with GREEN border is unfenced green open space

Area with RED border is fenced children's Play Area



Below: Viewed towards Junction with Willand Old Village Road.



Viewed from Junction with Willand Old Village Road direction.

1

Harpitt Close continued



Viewed from road



Slide and bench



See Saw



Roundabout & Bench

2

Sycamore Close

Owned and Maintained by MDDC

Play equipment was removed some years ago as area becomes too waterlogged to be used.

Now used as open space with part under trees and between two areas of protected woodland.

Entrances from Beech Close and Sycamore Close with Gated entrance to main B3181.



Sycamore Close exit



Entrance from B3181



View towards Beech Close exit

2

Sycamore Close continued



From Beech Close entrance



Exit to Beech Close

3

Orchard Way

Owned and Maintained by MDDC

Has a perimeter of hedges and fencing with open entrances from Pear Drive. Entrance nearest Orchard Way for vehicles and pedestrian footpath entrance at Jaycroft end. Gated pedestrian and vehicle entrances from Orchard Way and pedestrian entrance from Jaycroft.



Bench with Vehicle Gates



Swings



Ladders with bars



See Saw



Goal Posts - no pitch markings

3

Orchard Way continued



ABOVE: Entrance from Pear Drive looking towards Orchard Way and play equipment.



ABOVE: Pedestrian exit to Pear Drive.

BELOW: View from Jaycroft towards Orchard Way.



4

Chestnut Drive/Maple Close

Owned and Maintained by MDDC

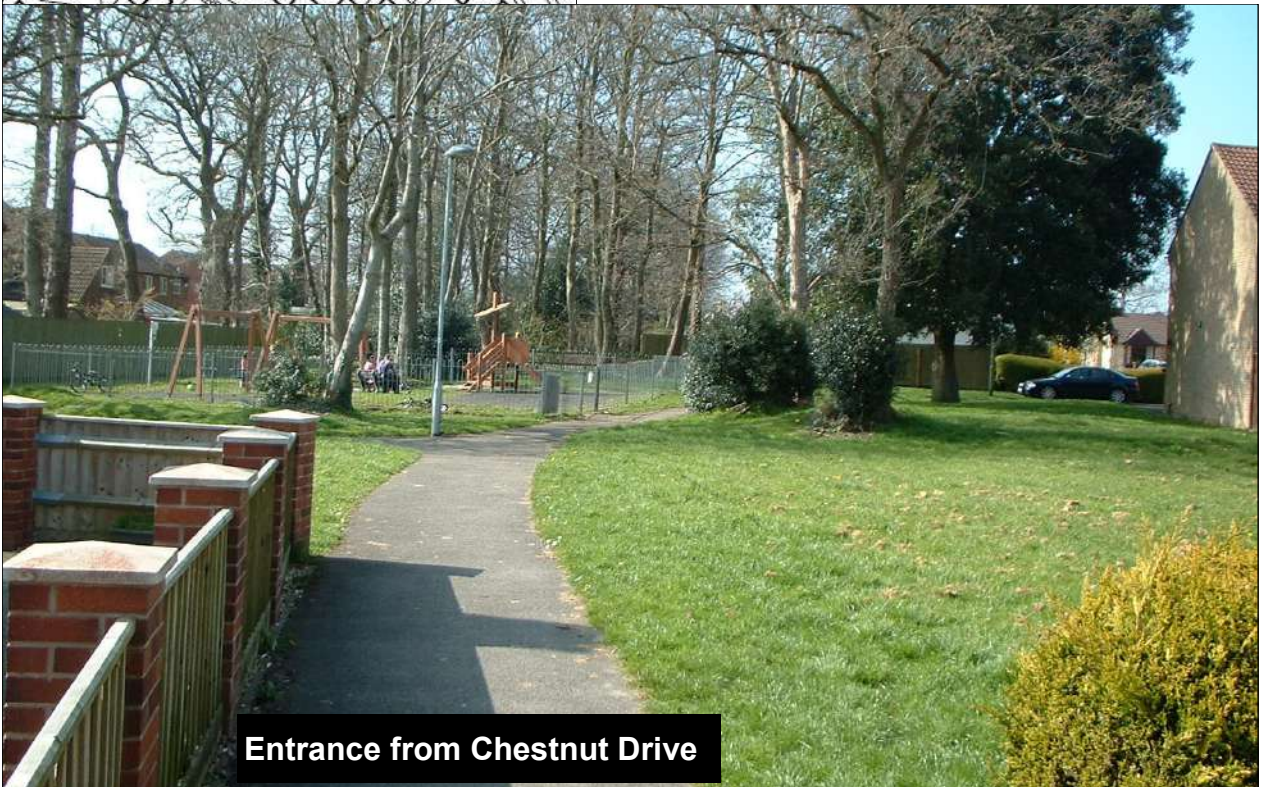


Area with RED border is unfenced green open space.

Area with BLUE border is fenced children's Play Area. Contains two sets of swings, a slide combination and bench.

Footpaths through the area with entrances from Chestnut Drive, Maple Close and Oak Crescent.

Woodland behind the play area open to public.



Entrance from Chestnut Drive



Entrance from Maple Close

4

Chestnut Drive/Maple Close continued



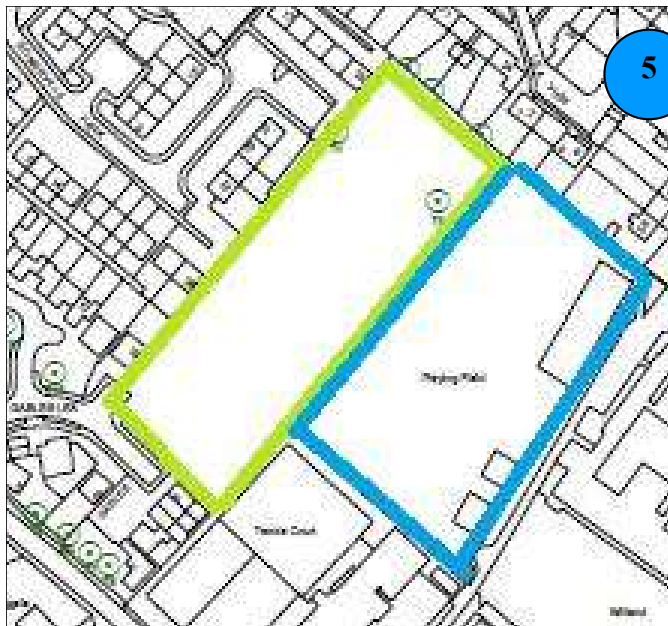
Maple Close to Chestnut Drive entrance



Exit to Oak Crescent

4

Chestnut Drive/Maple Close continued**Play Area from Oak Crescent pathway to Maple Close****BELOW:** Side view of slide combination.**ABOVE:** Slide combination



5

Jubilee Parish Field/Gables Lea

Section bordered by **GREEN** owned and Maintained by Mid Devon District Council.

Section bordered by **BLUE** owned and maintained by Willand Parish Council but some of the children's play equipment in fenced area belongs to Mid Devon District Council.



Gables Lea entrance



MDDC Section

Jubilee Field continued



Somerlea Entrance



View to right of entrance

Fenced area from Somerlea entrance.
This piece of equipment owned by

Footpath Somerlea to Village Hall



Roundabout and Seat

Jubilee Field continued



[Above]

**Combined Play Frame
with Slides.**

**[Right] Bench and Larger
Swings with Goal Posts
on Field to rear.**

**[Below] Equipment at
Village Hall end of fenced
area with bouncy toys in
foreground**



5

Jubilee Field continued



Child Swings, Sea Saw and Climbing Frame



Larger Swings



Picnic Bench with Shelter



Play Area viewed towards Somerlea

Jubilee Field continued



View towards Village Hall



Skateboard ramps



Shelter with BMX track behind



Netball Hoop

6

Victoria Close Open Space



Owned and Maintained by MDDC.

Area with GREEN border is unfenced green open space to South of Victoria Close. Mainly remains of old hedgerow with mature trees

Pictured from the main play area across Victoria Close.



7

Victoria Close/Blenheim Drive

Owned and Maintained by MDDC

Large green open space with open entrances from Blenheim Drive, top end of Victoria Close and Orchard Way. Gated entrance from lower end of Victoria Close through smaller fenced play area. Metalled footpaths running through site.

Has old mounds from hedges and tree stumps and some mature trees.

TOP: View from Blenheim Drive entrance towards Victoria Close.

BOTTOM: View from Blenheim Drive entrance down the site towards Orchard Way entrance.



7

Victoria Close/Blenheim Drive continued



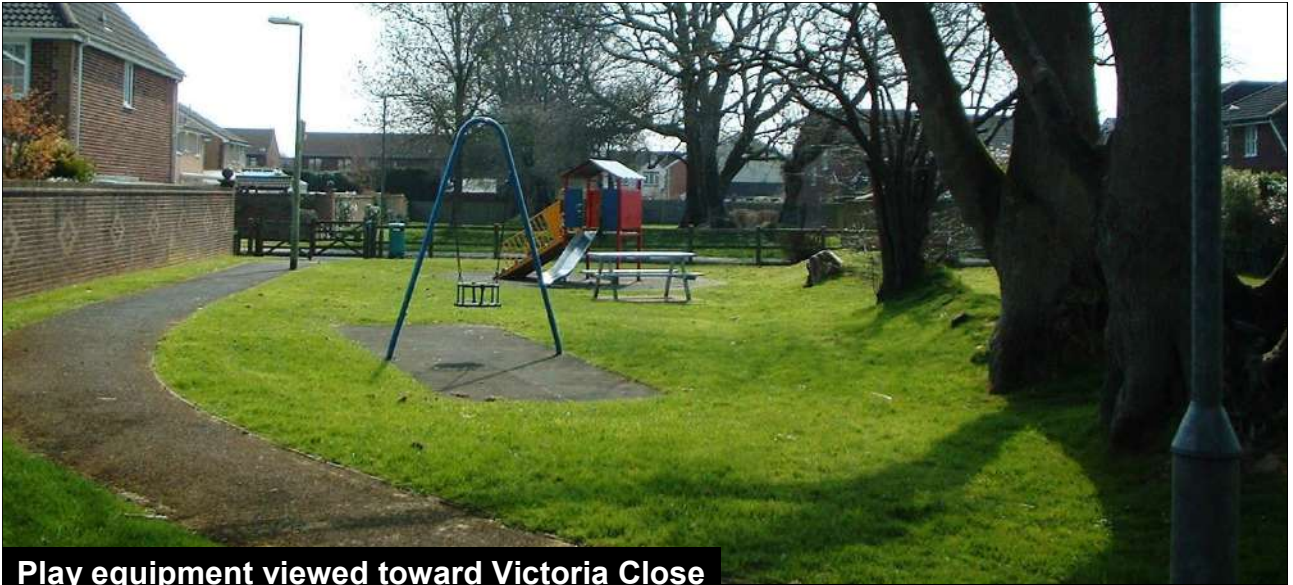
TOP: Entrance to top of Victoria Close.

MIDDLE: View from open area down the footpath towards Orchard Way.

BOTTOM: View from footpath junction in open space towards fenced play equipment and Victoria Close.



7

Victoria Close/Blenheim Drive continued**Play equipment viewed toward Victoria Close****Slide****Swings****Baby Swing****Bench**

7

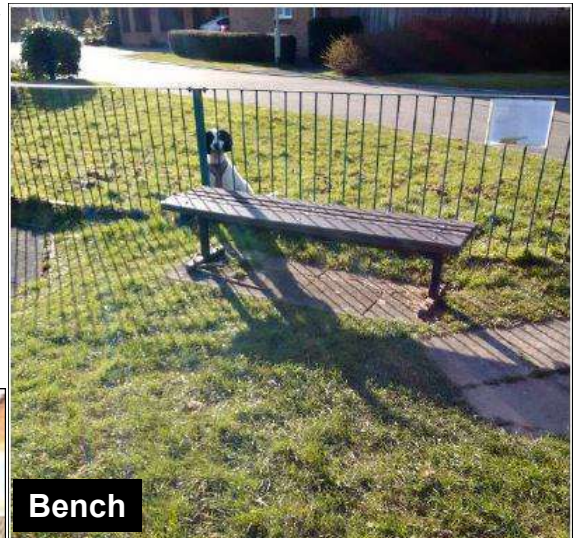
Victoria Close/Blenheim Drive continued**Miniature Goalposts****Basketball Hoop**

8

Worcester Crescent

Owned and Maintained by MDDC

Small area of fenced in play equipment.



Bench



Slide combination



Swings



See Saw



Behind slide

9

Willand Moor Road/Poppy Close

Owned and Maintained by MDDC

Fenced green area with some bushes in corners and edges. Two gated entrances.

TOP: Viewed from Willand Moor Road

BOTTOM: Viewed from Poppy Close



10

Greenwood

Owned and Maintained by MDCC

Fenced Green open space with some shrubs at edge.

Footpath in foreground leads through to Jaycroft.



11

Culm Valley Trail



Owned and Maintained by MDDC

To right is footpath and cycleway which leads up to the B3181. On the left is a footpath through to Greenwood and Jaycroft.



12

Willand Moor Road



Owned and Maintained by MDDC

Low lying ground with mature trees. Most of the area is fenced.



13

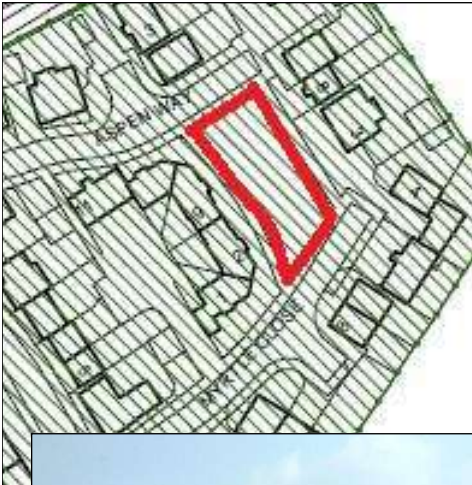
Aspen Way/Myrtle Close

Owned and Maintained by MDDC

Fenced area of grass with walkways on either side giving access to fronts of houses. Some planting in corners.

TOP: Viewed from Aspen Way to Myrtle Close.

BOTTOM: Viewed from Myrtle Close to Aspen Way.



14

Willand Moor/Buttercup Road

Owned and Maintained by MDDC

Fenced area of open space with smaller fenced play area with equipment.

TOP LEFT: Swings.

TOP RIGHT: Toddlers roundabout.

BOTTOM: Two views of slide combination.



14

Willand Moor/Buttercup Road continued**Viewed from Lupin Way****Viewed from Buttercup Road****Viewed from Buttercup Road**



15

Mallow Court

Owned and Maintained by MDDC

Small equipped and fenced play area.



Swings



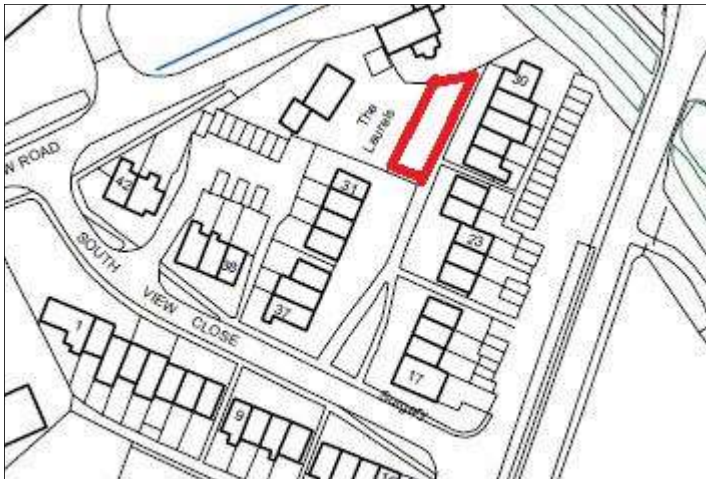
Slide combination



Horse Rocker



Slide



16

South View Close

Owned and Maintained by MDDC
Equipped fenced play area. All new equipment in 2014.

