

WILLAND PARISH PLAN

2005



Produced by
Willand Parish Plan Steering Group
on behalf of Willand Parish Council
November 2005

WILLAND PARISH PLAN

CONTENTS



Executive Summary	3
A village community in Devon	5
A brief history	7
Taking soundings – the Parish Plan	8
Transport and travel	9
Healthcare services	12
Policing, crime and anti-social behaviour	13
Community facilities and social activities	14
Housing needs	16
Activities for children and young people	17
The environment	20
Tables of issues and actions	21

Acknowledgments and thanks

The volunteer members of the Willand Parish Plan Steering Group for their hard work and commitment

Cllr Eddie Dennis and **Cllr Tony Hancock** who helped on the Steering Group

Brian Holmes and his team who distributed the questionnaire with the Village Magazine

The volunteers who helped to collect the questionnaires

John Bodley Scott, Community Development Officer at Mid Devon District Council, for advice and guidance

Special thanks go to **Donald Barr**, Social Science Research Consultancy, who analysed all the information and put together the main report

Willand Parish Council, who instigated the development of the Parish Plan, for their support throughout the process

EXECUTIVE SUMMARY

Willand Parish is situated in open countryside fifteen miles north of Exeter and approximately the same distance south of Taunton.

In the summer of 2003, the Parish Council decided to hold a meeting in order to consult with the community about developing a Parish Plan. Following this meeting the Willand Parish Plan Steering Group was set up, comprising volunteers, a parish councillor and the district councillor, with the remit of producing a Parish Plan.

It was decided to carry out a full survey giving everyone aged 11 years and over living in Willand an opportunity to say what they think about life in Willand today, and how they'd like to see things improved for the future.

From the survey which was carried out in March 2005, the Parish Plan has identified the following themes of concern in the village.

TRANSPORT AND TRAVEL

The need to reduce speed of road traffic to increase safety to pedestrians and other road users, and in particular to increase safety for school

children at arrival and going home times. The need to control on-road parking to reduce congestion and increase road safety, to improve the provision of safe walking paths for pedestrians and to develop cycle paths to Cullompton and Uffculme to ensure safe travel for cyclists of all ages

HEALTHCARE SERVICES

The need to improve the availability of appointments at Willand Doctors' surgery

POLICING, CRIME AND ANTI-SOCIAL BEHAVIOUR

The adoption of a partnership approach to reducing anti-social behaviour and vandalism

COMMUNITY FACILITIES AND SOCIAL ACTIVITIES

To prepare a comprehensive development plan for the recreation field. To develop a 'Welcome to Willand' pack for all new residents and extend the village website. The need to introduce a wider range of social activities including the improved frequency and size of Luncheon Club opportunities and for better kitchen facilities and sound system in the village hall.

HOUSING NEEDS

The need to develop a sufficient stock of affordable homes for local people to either rent or buy with adequate parking provision

ACTIVITIES FOR CHILDREN AND YOUNG PEOPLE

To develop both additional facilities and activities for children and young people and increased opportunities for childcare in the village.

VOLUNTEERING

To encourage volunteering to help with youth and community facilities

ENVIRONMENT

To establish a community recycling centre which incorporates glass, clothes, tins/cans, paper, cardboard and plastic and install additional post boxes

Willand Old Village
c. 1960



Willand Allotments
c.1960

WILLAND – A VILLAGE COMMUNITY IN DEVON

Willand, a parish small in area but large in population, is situated in open countryside fifteen miles north of Exeter and approximately the same distance south of Taunton. Willand is well served by the B3181, which runs through the centre of the village and connects with Junctions 27 and 28 of the M5 motorway.



The shopping centres of Cullompton, two miles to the south, and the market town of Tiverton, six miles to the north west cater for most needs. There is a frequent bus service through the village that

connects with both of these destinations as well as further afield to Exeter and Taunton.

There are three well stocked local stores, a post office, two pubs/restaurants, doctor's and dentist's surgeries, a pharmacy, a fish-and chip take-away, a restaurant, a hairdressing salon and several garages providing a range of local services.



Willand Primary School has about 250 pupils and is a feeder school to both Cullompton Community College and Uffculme School.



Willand has a large Village Hall in the centre of the village, adjacent to the three tennis courts and the recreational field. It is the centre for many village organisations, which include activities as diverse as shortmat bowling, square dancing, aerobics, a gardening club which holds an annual show and many other social organisations.

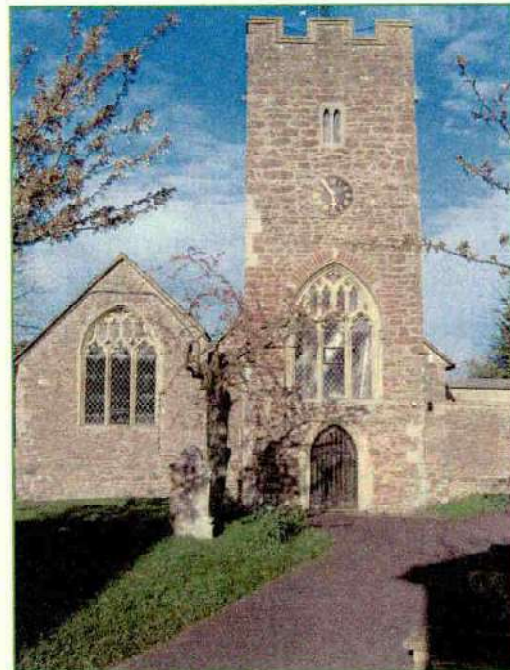
The village football, Willand Rovers, which has an enthusiastic following, benefits from an excellent ground in the centre of the village.



Willand magazine distributed free to every home is a bi-monthly magazine which contains reports and details of many of the organisations as well as reports from schools and local police and advertisements for local businesses.



There are two churches, the ancient parish church of St Marys and the Methodist Church both of which are well attended.



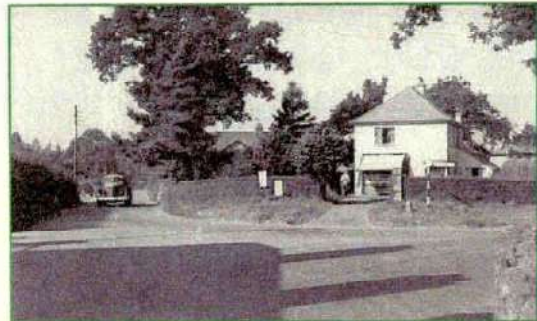
WILLAND – A BRIEF HISTORY

Willand is first recorded in 1042 as having "belonged to Ethmar", although it is likely that a settlement has existed since the Iron Age. The village is then mentioned in the Domesday survey of 1086 as a manor in the hundred of Halberton. It was then known as Willelanda and was given by William, son of Odo, to Taunton Priory. It remained in its hands for some 440 years until the dissolution of the monasteries in 1539. During that time the name changed at various times from Willaund, Wildelond, Wildelanda, Wyllonde to Willand.

In the 16th century Willand fell into various private ownerships and continued over the next three centuries as a small rural settlement with the gradual development of private residencies, the employment dominance of agriculture and a degree of rural poverty illustrated by local donations for the poor of the parish.

The main Bristol to Exeter railway line opened in 1844, with the branch line to Tiverton opening in 1848 and to Hemyock in 1876. The population at this time was only some 345 inhabitants.

Industry came in 1880 in the "Duchess of Devonshire Dairy Co" which later became part of the "Unigate Ltd" but after business declined, it closed in 1960 with the resulting loss of employment. In 1913 further industry came to Willand with the opening of Mr. Lloyd Maunder's wholesale Meat, poultry and egg business.



During the 20th century industry and transport has stimulated a succession of residential developments that have increased in frequency and scale since the building of the M5 motorway and nearby Junction 27 and have dramatically changed the physical appearance and social makeup of the village.

The river Culm runs through the lower part of the parish, and often inundates the adjoining meadows. The soil is a mixture of loam and black earth upon a subsoil of gravel.

WILLAND – TAKING SOUNDINGS – THE PARISH PLAN

In the summer of 2003, the Parish Council decided to hold a meeting in order to consult with the community about developing a Parish Plan. Attendees filled in a feedback form which was used to establish needs and concerns of the village. Following this meeting the Willand Parish Plan Steering Group was set up of volunteers and a parish councillor with the remit of producing a Parish Plan.

It was decided to carry out a full survey and the group developed a questionnaire under the following topics.

- Transport and travel
- Key village services
- Activities for children and young people
- Environment
- Recreation
- Housing needs.

It was designed to give everyone aged 11 years and over living in Willand an opportunity to say what they think about life in Willand today, and how they'd like to see things improved for the future.

The survey was conducted during the week of the 8th – 14th March, 2005.

The questionnaire was delivered to every household in the parish of Willand by the Willand Parish Magazine distributors at the end of February 2005. They were collected from each household by a team of volunteers who worked hard to ensure as many questionnaires as possible were completed.

A total of 653 households completed questionnaires represented the views of 1234 adults and 352 children. This is a very good response and represents over half of the population of Willand.

The questionnaire was completed by a cross section of ages and split fairly evenly between male and female. Nearly one third of the households had been residents of Willand for less than five years, indicating the significant number of newcomers to the village.

TRANSPORT AND TRAVEL

The issues

Traffic safety in the village

- Speed of road traffic
- Safety for school children
- On-road parking causing congestion

Lack of pavements/safe footpaths

Lack of safe cycle route to Cullompton and Uffculme

One of the key findings from the survey is the identification of householders' concerns over traffic safety hazards. These were reported both in the response to questions on traffic, vehicles, parking and emergency access and also in the 'general comments' section at the end of the questionnaire, where respondents were asked to make any further comments or suggestions about improving community life in Willand.



Nearly half of the households (48%) own two or more vehicles and most households were able to park their vehicles off the road either in a garage, or on their own drive, or in some other location off the road.

"Speed of cars and buses is of big concern to the village"

"Traffic calming controls in Orchard Way"

"Area round the Post Office should have lower speed limit"

Proposals

- Reduce speed of road traffic to increase safety to pedestrians and other road users
- Increase safety for school children at arrival and going home times
- Control on-road parking to reduce congestion and increase road safety
- Improve the provision of safe walking paths for pedestrians
- Develop cycle paths to Cullompton and Uffculme to ensure safe travel for cyclists of all ages

Only one in eight (13%) normally parked at least one vehicle on the road.



The most common means of travel out of the village was by car (80%) and over half of the respondents travelled out of the village by car once a day, indicating the large volume of car traffic travelling through the village daily. Only a small percentage (9%) travelled out by bus regularly, but nearly a third use the bus service at least occasionally; the standard of the bus service was considered generally good. A small proportion of people would use a late night bus service after 11.30 p.m. if it was available.

Over half of the residents used Tiverton Parkway railway station at least occasionally, and problems related to the use of the station were mainly to do with the level of parking charges and the frequency of scheduled service.



A significant proportion (43%) of the households reported traffic safety hazards in Willand. The most frequently cited locations were within the Old Village and, in particular, around the Post Office. There were also a number of people who cited the two linked roads, Orchard Way and Willand Moor Road, which have recently become a 'through route' from the Old Village to the roundabout junction with Uffculme Road.

Other areas mentioned were Gables Road; a cut through near Willand School and Silver Street; the main road (B3181) through the village; and the road outside the One Stop Shop in Halberton Road.



In particular, the dominant concerns were about the speed of traffic along these roads and the parking of vehicles on-road. In fact, respondents' greatest traffic and road safety concern was speeding traffic (74%), with nearly half of the total respondents being extremely concerned about this. The next greatest concern was parked cars near road junctions (62%), followed by safety in the centre of the village near the Post Office (58%), parked cars causing congestion (56%) and HGVs going through the village (50%). Nearly three-quarters of respondents supported at least one traffic control measure with the most popular suggestions being speed warning signs and the introduction of lower speed limits. A number of people commented that enforcement of the current speed limits would help to reduce traffic speed through the village.

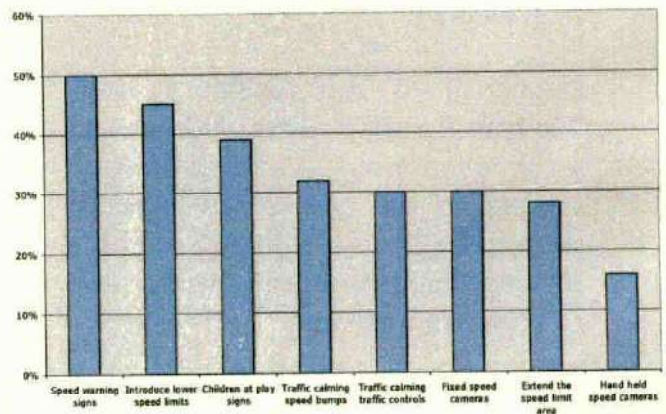
Traffic safety issue	Extremely concerned	Moderately concerned
HGVs going through the village	23%	27%
Parked cars causing congestion	28%	28%
Safety in the centre of the village near the Post Office	23%	35%
Parked cars near road junctions	33%	29%
Speeding traffic	48%	26%
Street lighting	7%	12%
Lack of safe pavements / footpaths	12%	23%
Lack of safe cycle paths in the village	8%	20%
Lack of cycle path to Cullompton	14%	21%
Lack of off road parking	13%	22%
Maintenance of roads in the parish	13%	28%

Nearly a quarter of the respondents travelled out of the village on a bicycle, at least occasionally; and nearly half said they did some cycling. Over 440 people had made some use of the recently developed cycle track to Tiverton Parkway station. More than a third of respondents were concerned about the lack of a cycle path linking Willand with Cullompton, with slightly less concerned about the lack of safe cycle paths in the village.

Over 500 people said they would make some use of both a cycle track to Cullompton and a cycle track to Uffculme if they were available, with more than 100 expecting to use both at least weekly.

The survey also identified some concern over a perceived lack of safe pavements or footpaths in the village.

Support for traffic control measures



HEALTHCARE SERVICES

The issue

Difficulty in obtaining appointments at Willand Doctors' surgery

A quarter of the households use the Willand Doctor's Surgery, the remainder travelling to Cullompton. Less than one in ten residents used the Willand dentist surgery, again most travelled to Cullompton. Nearly half of the residents travelled to Tiverton for an optician. The recently opened village pharmacy is being used by over half of the residents, with the remainder mainly travelling to Cullompton.



Respondents were asked about any difficulty they may have had in accessing certain health services in the last twelve months. A not insignificant minority (18%) reported problems accessing doctors, and a smaller proportion (10%) dentists. The comments made highlight the main issue with doctors as difficulty in getting

"Doctors surgery is limited in Willand,.."
"It's hard to get a local appointment at the Doctors"
"Doctor's situation must be addressed - size of village - surgery hours too short"

Proposal

- Improve the availability of appointments at Willand Doctors' surgery

appointments, either because no appointments were available or because of the length of the wait, in some cases more than a week. A number of people felt that the opening hours of the Willand surgery are very restrictive, especially for working people.

With dentists the main issue is the difficulty in getting registered with an NHS practitioner, but some also reported a long wait for appointments.



POLICING, CRIME AND ANTI-SOCIAL BEHAVIOUR

The issue

Anti-Social behaviour and vandalism

The Parish Plan Steering Group took the decision that the questionnaire would not ask any direct questions about policing and crime, but would simply ask about membership of, or interest in, Neighbourhood Watch. Nearly half of the responding households are already members of the scheme, and a further 90 said they would like to become members.

		Number of households	Percentage of all households
Member of Neighbourhood Watch?	Yes	306	47%
	No	316	48%
	no reply	31	5%
If no, would like to become member?	Yes	90	14%
	No	172	26%
	no reply	54	8%

However, some 31 households made comments relating to policing, crime and anti-social behaviour in the 'general comments' section. A high proportion of those who commented would like to see a more visible police presence in the village, and felt that this would be a deterrent to anti-social behaviour and vandalism in particular.

"A lot of trouble in any village is vandalism. A police presence would be a deterrent"
"Higher profile community police patrols, prevention and local knowledge is always better than having to solve crimes"

Proposal

- Adopt a partnership approach to reducing anti-social behaviour and vandalism



There was specific concern over the park areas in respect of vandalism, drug taking and the riding of motorbikes. Lack of facilities for young people was acknowledged as a possible reason for anti-social behaviour (see also the later section on 'activities for children and young people').

COMMUNITY FACILITIES AND SOCIAL ACTIVITIES

The issues

The need for all ages to be able to make better use of the Willand recreation field

Lack of knowledge of existing village facilities

A need for a wider range of social activities in the village, including evening

classes, for all ages

Improved facilities for the elderly

Further improvements to the Village Hall

The survey found that the majority of households in Willand (65%) have never used the recreation/sports field near the Village Hall. However, nearly half of the respondents, irrespective of their own current use, would like more use to be made of this facility. The most popular improvements suggested to achieve this are:



- More seats/ benches
- Multi-use games area
- CCTV
- Better lighting
- Local fund raising events
- Landscaping
- Footpaths.

*"The recreation ground should have an area as a landscaped park ..
"Exercise classes, dancing, amateur dramatics"
"More information about what goes on ..."*

Proposal

- To prepare a comprehensive development plan for the recreation field
- Develop a 'Welcome to Willand' pack for all new residents
- Extend the village website
- Introduce a wider range of social activities
- Improve frequency and size of Luncheon Club opportunities
- Better kitchen facilities and sound system in the village hall

Other suggestions for improving the recreation/sports field include organised sports activities (football, basketball and cricket were all mentioned), a cycle track, a skateboard park, car boot sales, an annual summer barbeque, a bonfire night, a village fete or summer fair, live music and outside theatre.

In contrast to the use of the recreation/sports field, most households had used the village hall but, again, would also like to

see its use extended. From both children and adults there is a demand for more social events. The most popular specific requests were dance classes for all ages, exercise and yoga classes and live music. Other suggestions include drama, art classes and films. Some 195 households (30%) indicated that they would be interested in adult education classes, the most popular being IT/computing and foreign languages. For very young children and their parents some form of baby group, for example 'gym tots', was requested.

However some of these events and activities already exist - for example, there is a weekly exercise class in the village hall - and this suggests that there needs to be better information and communication to the community about what is already happening in the village hall - or perhaps some people should take more notice of the information that is already there! In either case, some residents are unaware of what is currently available.

There was considerable interest in the development of a community coffee shop and meeting place/drop-in centre in the village. Over 100 people were interested in a public internet access point. A quarter of the senior citizens were interested in the development of a luncheon club and a slightly smaller number in a day centre facility.

Use of possible community facilities

Community facility	Some use - number
Community coffee shop	487
Community meeting place/drop-in centre	285
Public internet access	147
Luncheon club for senior citizens	111
Day centre for senior citizens	87

A few households reported difficulties with using the village hall. They noted the lack of a toilet with disabled access, no dedicated baby changing facilities, and no hot water. Others suggested updates for the kitchen and sound system were needed.



Most residents travel for shops and services to Cullompton, Tiverton, Taunton and Exeter. However the village shops and services were frequently used. These included the Post Office (77%), garages (35%), hairdressing (20%), fruit and vegetables (19%), pubs and restaurants (13%).

HOUSING NEEDS

The issue

A relative lack of affordable housing for local residents

The majority of households did not express an opinion on the need for new homes in the village, saying they didn't know whether there were people needing a home in the village. However, 76 households said no further homes were needed whilst 192 said they were aware of people needing a home. Affordable homes to buy, homes for young people and homes to rent topped the list of types of housing though to be necessary.



"Should be more cheaper homes to buy for local people only.."

"Housing for people to rent or share"

Proposal

- Develop a sufficient stock of affordable homes for local people to either rent or buy

Thirty eight households reported an existing housing need and, given the overall response rate, this suggests a current housing need in the village of seventy to eighty homes.

Type of housing	Percentage of households with existing or expected housing needs
Affordable homes to buy	54%
Homes for young people	40%
Homes to rent	31%
Homes for families	29%
Homes with shared ownership	17%
Homes for single people	11%
Homes for people with disabilities	9%
Homes for elderly people	9%

ACTIVITIES FOR CHILDREN AND YOUNG PEOPLE

The issue

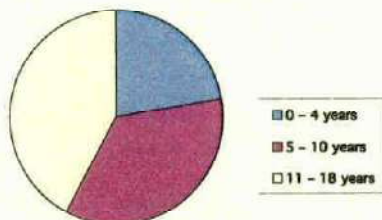
The need to improve the range and quality of activities for children and young people

Lack of childcare for working parents
The need for more volunteers to help with village activities

“More holiday activities for teenagers, for example football coaching ...”
“Think a café/drop in area for teenagers is a great idea.”
“Maybe an all weather play area for older children ..”
“Refurbish the youth club building”

Just under 30% of the households had children under the age of 18 years and this section was completed only by those households with children.

Children by age group



Proposal

- The development of additional facilities and activities for children and young people
- Develop increased opportunities for childcare in the village
- Encourage volunteering to help with youth and community facilities

The survey found that the following suggested activities would attract significant numbers of children if they were available in the village:

- Out of school holiday club
- Swimming club
- Field sports – football etc.
- Scouts/cubs
- Library (although the mobile library is available in some parts of the village)
- After school club
- Dance classes
- Martial arts.

	Use within village	Use outside the village	Would use if available in the village	Will use in the next five years
	Total numbers of children			
Out of school Holiday Club	6	8	56	8
Swimming Club		38	56	7
Field sports–football, etc.		35	48	16
Scouts/Cubs		6	35	4
Library	22	61	35	7
After school club	8	7	34	10
Dance classes	3	14	29	3
Martial Arts	1	5	24	7

Most parents feel there are not sufficient activities for children in the village, especially for older children aged 12 years and over. Again, there is a substantial demand for organised sports activities, particularly football, and the suggestion that these activities should be aided by more sports equipment being provided. There is also significant interest in the provision of a skateboarding park.



Activity	Under 12s	12s and over	Under 12s and / or 12 and over	
	Number of households		Number of households	% of all hhs with children
Organised youth sports teams	64	44	80	42%
A supervised "Drop-in centre" with drinks machine and pool table	21	69	78	41%
Football	50	44	72	38%
A young person's cafe	13	55	62	32%
Skateboarding park	16	38	48	25%
More sports equipment	26	30	46	24%
Cricket	23	31	44	23%
A area in the village which the young people look after	19	26	40	21%
Basketball	17	25	33	17%
A Teen shelter	5	31	33	17%
Netball	19	20	30	16%
Internet access point	10	24	27	14%

For the 12-18 year olds a supervised 'drop-in' centre with a drinks machine and a pool table, and a young person's café, would be two very popular developments for the village youth, along with an area in the village which they could look after themselves. General comments suggested a play area with equipment for older children and teenagers, or an all weather play area.

Nearly 30 working parents currently require childcare in the village for both pre-school and school age children, which will need to be open from 8.00 a.m. to 6 p.m. to provide for their working needs. There is substantial demand for all types of childcare to be provided.



Volunteering

Twenty four households volunteered to help run activities for children and thirty four indicated that they would be willing to help with community facilities.

THE ENVIRONMENT

The issue

Provision of Community Recycling Centre

Lack of post boxes

The Community Composting site was considered to be a very successful community project, and over half of the households use the



site.

The majority of residents (63%) would like to see recycling services extended to include a community recycling centre which incorporates glass, clothes, tins/cans, paper, cardboard but most of all, plastic. However, householders' views may have changed in the light of the recent development by Mid Devon District Council of a kerbside collection recycling service.

The following suggestions were most popular as a way of improving the visual character of the village, more floral displays (tubs, flower beds) (55%), more litter bins (53%), maintenance of footpaths (51%), more dog litter bins (49%) and better control of fly tipping (46%).

"Wooded area, verges, pavements etc. need more attention"
"More floral displays"
"We need a post box"

Proposal

- Establish a community recycling centre which incorporates glass, clothes, tins/cans, paper, cardboard and plastic
- Install additional post boxes



General comments made by respondents included tidying up the wooded areas, the removing of verge side grass cuttings, keeping alleyways and the motorway subway clean, landscaping the recreation field and, in particular, more seats throughout the village. A number of individuals commented specifically about the need for better control of dog mess.

Other comments referred to the relative lack of post boxes, particularly on the Willand Moor Estate

TRANSPORT AND TRAVEL

ISSUE	PROPOSAL	ACTION	PARTNERSHIP	TIMESCALE
Traffic safety in the village	Reduce speed of road traffic to increase safety to pedestrians and other road users	<p>Introduce 20 mph speed limits in Gables Road and in Willand Old Village (Post Office area)</p> <p>Investigate the use of mobile speed warning signals:</p> <ul style="list-style-type: none"> • B3181 (Silver Street) • Orchard Way • Willand Moor Road • Gables Road <p>Investigate the installation of chicanes in Orchard Way.</p>	<p>Devon County Council (Highways Department) Police Authority</p> <p>Devon County Council (Highways Department) Police Authority</p>	<p>Short term</p> <p>Short term</p>
Increase safety for school children at arrival and going home times	Increase safety for school children at arrival and going home times	<p>Undertake a traffic survey in the village</p> <p>Install hazard warning lights near school entrances in Gables Road and Silver Street, which operate during these times</p>	<p>Devon County Council (Highways Department)</p> <p>Devon County Council (Highways Department) Police Authority</p>	<p>Short term</p> <p>Short term</p>
Control on-road parking to reduce congestion and increase road safety	Control on-road parking to reduce congestion and increase road safety	<p>Ask authorities to consider measures to control on-road parking near road junctions and enforce parking regulations:</p> <ul style="list-style-type: none"> • Willand Moor Road 	<p>Devon County Council (Highways Department) Police Authority Emergency Services</p>	<p>Short term/on-going</p>

Lack of pavements/safe footpaths	Improve the provision of safe walking paths for pedestrians	<ul style="list-style-type: none"> • Orchard Way • Chestnut Drive • Station Road (One-Stop area) • Willand Old Village (Kentisbeare junction) <p>Provide marked 'virtual' pavements for pedestrians and cyclists in areas where no pavement is possible</p> <p>Ensure hedges and roadside vegetation is kept trimmed e.g. along B3181</p> <p>Investigate the extension of the public footpath network in and around the village.</p>	<p>Devon County Council (Highways Department)</p> <p>Landowners Devon County Council (Highways Department)</p> <p>Landowners Devon County Council Mid Devon District Council</p>	Short term
Lack of safe cycle route to Cullompton and Uffculme	Develop cycle paths to Cullompton and Uffculme to ensure safe travel for cyclists of all ages	Investigate the development of a dedicated/off-road cycle/footpath to Cullompton and Uffculme	Landowners Devon County Council (Highways Department)	Short term

HEALTHCARE SERVICES			
ISSUE	PROPOSAL	ACTION	PARTNERSHIP
Difficulty in obtaining appointments at Willand Doctors' surgery	Improve the availability of appointments at Willand Doctors' surgery	Discuss the possibility of extending the surgery's opening hours	College Surgery

POLICING, CRIME AND ANTI-SOCIAL BEHAVIOUR

ISSUE	PROPOSAL	ACTION	PARTNERSHIP	TIMESCALE
Anti-Social behaviour and vandalism	Adopt a partnership approach to reducing anti-social behaviour and vandalism	<p>Investigate with the Police and Police Authority the possibility of a more visible police presence in the evenings particularly in all park areas</p> <p>Encourage better links between the police and the village young people:</p> <ul style="list-style-type: none"> • Schools • Youth Club • Other youth organisations 	<p>Police Authority</p> <p>Police Authority Willand Primary School Cullompton Community College Uffculme School Willand Youth Club Devon County Council (Youth Service) Devon Youth Association</p>	<p>Short-term</p> <p>Short term/on-going</p>

COMMUNITY FACILITIES AND SOCIAL ACTIVITIES

ISSUE	PROPOSAL	ACTION	PARTNERSHIP	TIMESCALE
<p>The need for all ages to be able to make better use of the Willand recreation field</p>	<p>To prepare a comprehensive development plan for the recreation field</p>	<p>Identify specific projects to enhance young peoples use of the recreation field</p> <p>Enhance the existing skateboard base in order to access loan equipment from DCC</p> <p>Explore possible grant aid and organise local fund raising</p>	<p>Mid Devon District Council</p> <p>Prowing Homes Willand Primary School Council</p> <p>Mid Devon District Council</p> <p>Devon County Council</p>	<p>Short term</p> <p>Short term</p>
<p>Lack of knowledge of existing village facilities</p>	<p>Develop a 'Welcome to Willand' pack for all new residents</p> <p>Extend the village website</p>	<p>Carry out landscaping to improve the visual appearance of the recreation field including an improved entrance route from Gables Road</p> <p>Install additional seats/benches</p> <p>Identify the range of local information to be included in a 'Welcome to Willand' pack</p> <p>Further enhance the Willand website and encourage links to organisations' own websites</p>	<p>Council for Voluntary Services</p> <p>Mid Devon District Council</p> <p>All village organisations</p> <p>Webmaster</p> <p>All village organisations</p>	<p>Short term</p> <p>Short term</p> <p>Short term</p>

A need for a wider range of social activities in the village, including evening classes, for all ages	Introduce a wider range of social activities	Investigate with East Devon College/Adult and Community Learning (Devon County Council) about holding adult education classes in the village Investigate the development of a meeting place/drop-in centre/internet access point Investigate the range of possible venues for social activities	East Devon College Devon County Council (Adult and Community Learning) Village Hall Trustees Willand Primary School Halfway House Verbeer Manor The Gables (Devon County Council)	Short term Short term
Improved facilities for the elderly	Improve frequency and size of Luncheon Club opportunities	Ask St Mary's PCC to consider increasing the frequency of the existing Luncheon Club	St Mary's PCC	Short term
Further improvements to the Village Hall	Better kitchen facilities and sound system	Recommend the Village Hall Trustees update the kitchen and sound system	Village Hall Trustees	Medium term

HOUSING NEEDS				
ISSUE	PROPOSAL	ACTION	PARTNERSHIP	TIMESCALE
A relative lack of affordable housing for local residents	Develop a sufficient stock of affordable homes for local people to either rent or buy with adequate parking provision	Investigate ways of addressing the imbalance between affordable homes and the commercial sector: <ul style="list-style-type: none"> • Affordable rented housing • Shared ownership housing 	Mid Devon District Council Devon County Council Housing Association Landowners	On-going

ACTIVITIES FOR CHILDREN AND YOUNG PEOPLE

ISSUE	PROPOSAL	ACTION	PARTNERSHIP	TIMESCALE
<p>The need to improve the range and quality of activities for children and young people</p>	<p>The development of additional facilities and activities for children and young people</p>	<p>Further consult with children and young people on the suggestions made in the survey</p>	<p>Willand Primary School (School Council, PTFA) Willand Youth Club Devon Youth Service Willand Pre-school Devon Youth Association Devon Library Service Scout Association Sports Associations Devon Play Association</p>	<p>Short term</p>
<p>Lack of childcare for working parents</p>	<p>Develop increased opportunities for childcare in the village</p>	<p>Explore possible venues for a supervised drop-in centre and also equipment suitable for the 12-18 year olds.</p>	<p>Willand Youth Club Devon Youth Service Devon Youth Association Village Hall Trustees</p>	<p>Short term</p>
		<p>Discuss with Willand Pre-school and Willand Primary School about the possibilities for development of childcare facilities</p>	<p>Willand Pre-school Willand Primary School Devon County Council (zero 14plus)</p>	

VOLUNTEERING

ISSUE	PROPOSAL	ACTION	PARTNERSHIP	TIMESCALE
The need for more volunteers to help with village activities	Encourage volunteering to help with youth and community facilities	Organise a volunteering evening by inviting any interested people to a social event to discuss what they would like to get involved in.	INVOLVE (Tiverton) Council for Voluntary Services Volunteer Bureau	Short term

ENVIRONMENT

ISSUE	PROPOSAL	ACTION	PARTNERSHIP	TIMESCALE
Provision of Community Recycling Centre	Establish a community recycling centre which incorporates glass, clothes, tins/cans, paper, cardboard and plastic	Review the need for a recycling centre following the MDDC kerbside recycling service	Mid Devon District Council	Short-term (3 months)
Lack of post boxes	Install additional post boxes	Open discussions on the installation of more post boxes	Post Office	Short-term